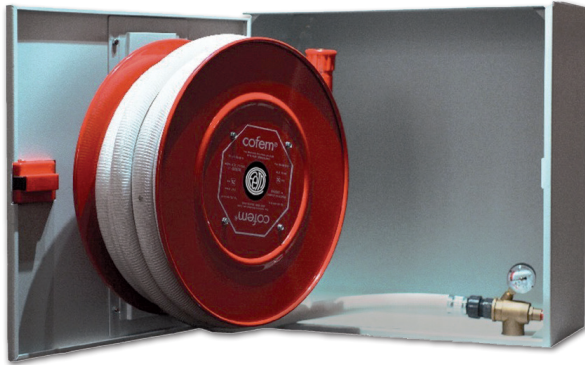


Ø25 fire hose cabinet C5



Fire hose cabinet Ø25 mm according to EN 671-1 standard with 20 m of semi-rigid hose manufactured according to EN 694.
It is composed of:

Horizontal cabinet built of 1 mm steel plate thickness, painted in grey color RAL 7035, measures 570 x 570 x 255 mm, with blind door of the same material and color, and quick opening lock, provided with support arm fixing and pre-holes for water supply, including reel, hose, nozzle, swing arm, seat valve, manometer and supply hose.

It can be made in another color, with the RAL provided by the costumer, or in stainless steel, and it can be mounted in a floor bow.

Features:

- Reel mounted on the door of the cabinet to facilitate its handling
- Reel of Ø460 mm disks, painted in red, with axial supply.
- Semi-rigid hose Ø25 mm and 20 m length, manufactured according to EN 694 standard and CE mark.
- Rail for hose allows the exit of the hose in any direction from the frontal 180°.
- Hose nozzle of three positions: close, spray and jet, connected to the end of the hose by threaded prop.
- Seat valve at 90° of 1", with 1/8" manometer outlet.
- Manometer graduated from 0 to 25 bars.
- Supply trigger between valve and reeling frame, with a Ø25 mm semi-rigid hose.

