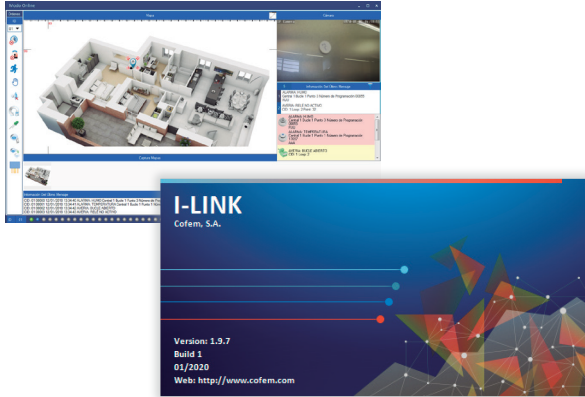




# Management software

## I-LINK



I-LINK is a configuration and monitoring software for the Cofem algorithmic-addressable control panels. The I-LINK software is designed to perform two functions:

Configuration of the control panel:

With the software (in its basic version), the system's operating parameters can be configured by following a set of simple steps: the general activation parameters of the control panel, the definition of the points, the activation of the relays and the definition of the area listings and activation listings.

All this with functions that assist the user in simplifying the data entry procedures, such as the use of the Cofem Installer app (for smartphones and tablets), the display of the configuration settings in tree

format, the possibility of copying and moving loops, of modifying the information directly on the tables of points, relays, etc.

Moreover, I-LINK allows for configuring the installation's video cameras and subsequently associating them in the extended version (ONLINE) to the detection elements.

ONLINE:

With the extended version of the software, I-LINK allows for ONLINE (real time) connection to the fire detection and alarm control panel, allowing the real-time display of the events, and also allowing for action to be taken (monitoring, cancelling, starting up, activating evacuation, etc.).

For an improved display, the installations blueprints can be entered in several formats (including Autocad) and the different detection elements can be placed on these blueprints. When an event occurs, the appropriate blueprint is opened, focusing on the event, enabling the user to zoom in, switch blueprints, see the sequence of events, etc. The installation's cameras can also be placed on the blueprints to relate them to the detection elements. Thus, when an event occurs, the related camera will be opened making it possible to view what is going on in that area of the installation. Also, at any time, you can click on any camera and view its images. On configuring the cameras, there is also the possibility of activating an image manager that will give us a warning in I-LINK ONLINE of the possible identification of fire.

By registering the installation in the Cofem Guard app (for smartphones, tablets or emails), I-LINK ONLINE will also send information of the events from the fire detection and alarm system to 5 users who will receive it in real time, depending on the connectivity/reception of these devices.

Features:

Basic Version (for programming the control panel):

- Allows for easy programming of the control panel from a PC.
- Allows for simple management of the configurations of all the Lyon Remote, Zafir and Compact Lyon installations.
- Loads the information on the installation's points from the Cofem Installer app.
- Configuration of the installation's video cameras.

Extended Version (for ONLINE management):

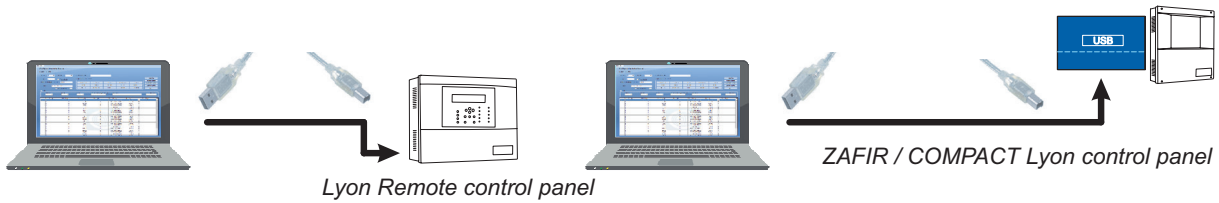
- Allows for ONLINE management of the control panel, offering many control possibilities.
- Displaying events on the installation's blueprints.
- Displaying of the video cameras of the fire detection events associated to the installation.
- Using RS232/485 converters, it allows for distances of up to 1200 m between the PC and the control panel.
- Allows for using wiring and the TCP/IP protocol in the installation.
- Possibility of managing up to 35 control panels simultaneously in a single installation.

NOTE: The functions offered in the product will depend on its version.

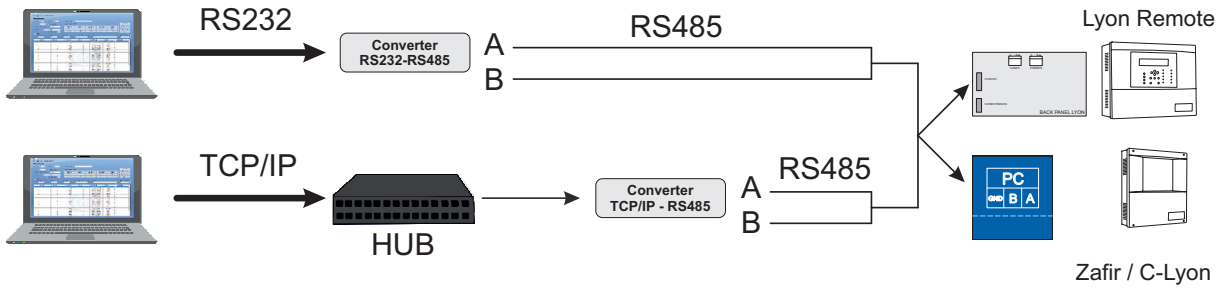
There are 4 software licences: ILINKLRM, for Lyon Remote control panels, ILINKZFR, for Zafir control panels, ILINKCTL, for Compact Lyon control panels, and ILINKONLINE, for use in any Cofem addressable control panel.



Lyon Remote connection diagram



Connection 1 for control panel by RS485 or TCP/IP protocol (extended version)



Example of connection network and with I-link

