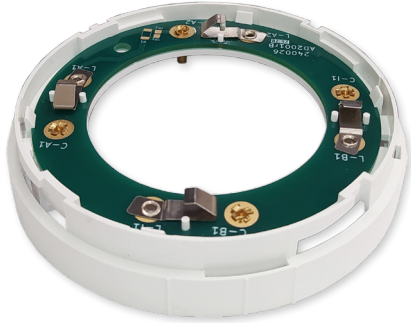




CONVENTIONAL SYSTEM

# Socket adapter A50BI

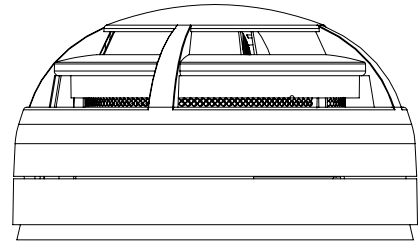
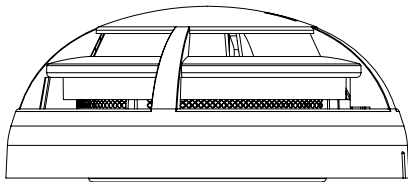


To facilitate the task of updating the A30X system to the new A50 range detectors, Cofem has an "interconnection base" that allows for placing the detectors of the algorithmic-addressable and conventional system directly on the sockets of higher systems without the need to change or rewire the sockets.

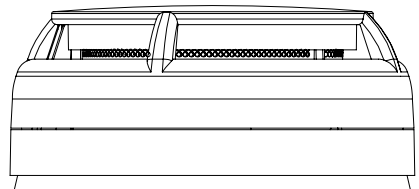
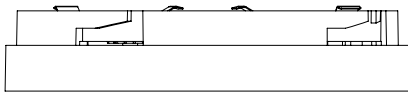
Thus, if the wiring and the sockets of the installation are in good condition, a quick, simple and very cheap update to the system can be carried out, based on replacing the fire detection and alarm control panel and its detectors.

The A30XBI adaptor can be used with conventional and algorithmic-addressable detectors and these are supplied configured according to the detectors to be replaced.

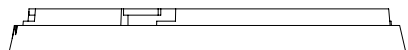
A50 detector



A50BI adapter



Base (A30XZO - A30XZAL)



Assembly diagram