



ONIX

ADDRESSABLE ALGORITHMIC CONTROL PANEL

ONIX addressable algorithmic control panel for fire detection and fire alarm, certified according to EN 54-2 and EN 54-4 with UL-EU marking.

Control panel with capacity to adapt optimally to small and medium-sized installations.

The ONIX control panel has a capacity of 1 or 2 loops, with 226 elements and 64 relays per loop (452 elements and 128 relays in total), allowing for maximum performance when using A50xxLD fire detectors, which have built-in sound and visual alarm notification.

They have 2 independent sounder outputs, 2 independent 24/30V auxiliary power supply connectors with programmable reset, functionality to configure points in sequential order in the loop, to assist in locating open loops, the possibility of configuring points with the Cofem Installer mobile application with Android and IOS operating systems, I-Link software (for PC configuration), etc.

Enables Cofem 360 remote functionality on demand, receiving notifications of alarms, faults, etc., from a mobile phone with internet access, as well as checking the latest events or performing

actions on the control panel.

The control panel can connect up to 15 network control panels (Lyon, Quartz, Zafir and C-Lyon models), as well as connecting to a fire alarm receiving centre, Modbus protocol for integration into SCADA or similar systems, and I-link online (software for monitoring with installation plans and real-time action).

As for the loop elements, it is fully compatible with the Lyon system, noting that the sensors, alarm call points, relay modules, masters and technical signal modules are self-identifiable, meaning that they can all be installed without the need for previous manual coding, greatly facilitating assembly and subsequent modifications to the installation.

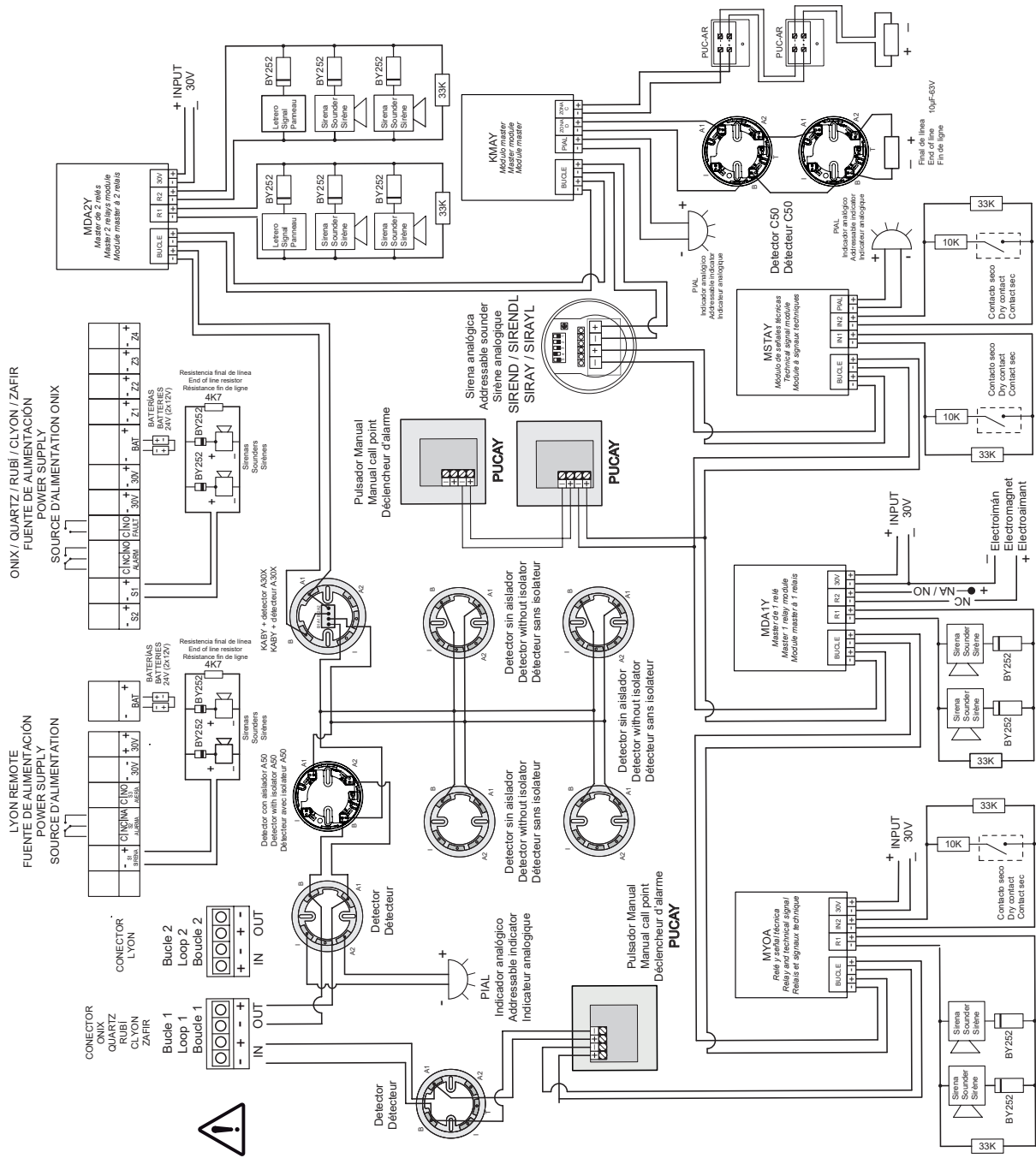
The control panel is CE marked in accordance with standards EN 54-2 and EN 54-4 and certified with the globally recognised UL-EU quality mark, demonstrating a firm commitment to quality and its production system.

FEATURES

- Control panel with 1 or 2 loops.
- Loop capability 226 points.
- Capacity for 64 relays per loop and 128 in total.
- Allows A50xxLD detectors with visual and sound alarm notification.
- Search for loop points in sequential order according to their physical position on the cable.
- Programming of 99 zones.
- Registry with capacity of 6601 events.
- Relay configuration with activation of 1, 2 or 3 alarm detectors.
- Relay trigger auto-configuration function.
- 2 independent programmable sounder outputs.
- 2 auxiliary 30V output connectors with programmable reset.
- Alarm output as an unmonitored voltage-free relay.
- Fault output, delayed and monitored.
- Allows addressable acoustic and visual sounders to be connected to the loop.
- Evacuation push button.
- Backlit LCD display with 4 lines and 40 characters.
- It incorporates several languages by default (Spanish, English, French, Portuguese, etc.).
- Configurable via PC software, I-Link.
- Event management with facility drawings using PC software, I-Link online.
- Access to the panel keypad using a numeric code.
- Connection of up to 15 repeaters and/or 15 network control panels.
- Cofem 360, CRI and MODBUS functionality on demand.
- Dimensions: 363 x 331 x 96 mm (with cover).
- UL/EU certification according to Standard EN 54 Part 2 and EN 54 Part 4, and CE marking according to European Construction Products Regulation (EU) No. 2024/3110.

TECHNICAL FEATURES

Input voltage	110/230 Vac 50/60Hz	Maximum current per loop	500mA/24 at 24V/DC
Output voltage	24V nominal	Communications port	USB 2.0/1.1 type B and RS485
Max. consumption	70VA at 230 VAC	Environmental conditions	-10°C+50°C 20%-95%RH
Battery charger	Yes	Dimensions	368x336x96mm (with cover)
Devices per loop	226	Weight (without batteries)	4,5kg
Battery fuse	4A	Standard	EN 54 part 2 and 4
IP protection	IP30	Sounder fuse S1	0,75A
Output fuse 30V	0,5A	Sounder fuse S2	0,5A



NOTE: Diagram indicates the installation of diodes in sounders.
If these sounders have diode incorporated, it is not necessary to add it.

General wiring diagram Onix, Quartz, Rubi, Lyon Remote, Zafir and C-Lyon